

# Mechanical Arm Dual Monitor Desk Mount

STAND-V0020 Series

Assembly Manual

---

Individual Product SKUs

STAND-V0020 STAND-V0020W



# WARNING



If you do not understand these directions, or if you have any doubts about the safety of the installation, please contact our product support team at 309-278-5303 or [help@vivo-us.com](mailto:help@vivo-us.com) for further assistance. Check carefully to make sure there are no missing or defective parts. Failure to report missing parts within 30 days may result in denial of free replacement. Improper installation may cause damage or serious injury. Do not use this product for any purpose that is not explicitly specified in this manual. Do not exceed weight capacity. We cannot be liable for damage or injury caused by improper mounting, incorrect assembly or inappropriate use.



## WARNING: CHOKING HAZARD

SMALL PARTS - NOT FOR CHILDREN UNDER 3 YEARS. ADULT SUPERVISION IS REQUIRED.



## DO NOT EXCEED WEIGHT CAPACITY

FAILURE TO DO SO MAY RESULT IN SERIOUS INJURY.



## NEVER EXTEND PAST DESKTOP EDGE

Monitor should always be positioned over the desktop to prevent potential damage to desktop. Clamp is **NOT** designed to provide full support to the monitor when the arm is positioned away from the desktop, putting unnecessary strain on your desktop. Doing so may result in damage and/or serious personal injury.

## Need Help? We're Here For You

*US-Based Customer Support from Trained Professionals*

**Monday-Friday from 7am-7pm CST**

**Saturday 8am-4pm CST**



### Email Us

[help@vivo-us.com](mailto:help@vivo-us.com)



### Chat with Live Agent

[www.vivo-us.com](http://www.vivo-us.com)



### Give Us a Call

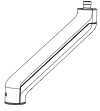
309-278-5303 ext. 1



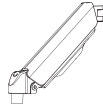
Assembly Video & Product Info

[www.vivo-us.com/products/stand-v002o](http://www.vivo-us.com/products/stand-v002o)

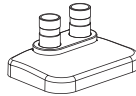
## Package Contents



**A (x2)**  
Lower Arm



**B (x2)**  
Upper Arm



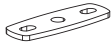
**C (x1)**  
Base



**D (x1)**  
Lower Clamp



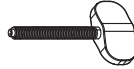
**E (x1)**  
Upper Clamp



**F (x1)**  
Grommet Plate



**G (x2)**  
VESA Plate



**H (x1)**  
Knob

---

## Included Hardware & Tools



**S-A (x2)**  
M6x8mm Screw



**S-B (x2)**  
M6x10mm Screw



**S-C (x2)**  
M8x30mm  
Screw



**M-A (x8)**  
M4x12mm  
Screw



**M-B (x8)**  
M5x12mm  
Screw



**M-C (x8)**  
M5 Washer



**T-A (x1)**  
5mm Allen Wrench



**T-B (x1)**  
4mm Allen Wrench

---

## Weight Capacity:

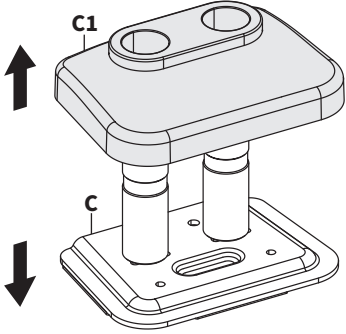


Per Arm

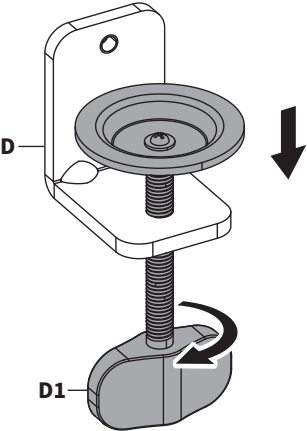
# Assembly Steps

## STEP 1

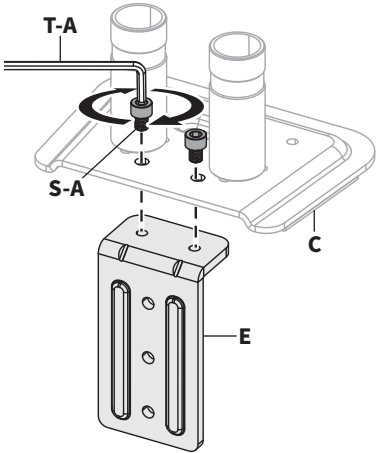
### Option 1: Clamp Installation



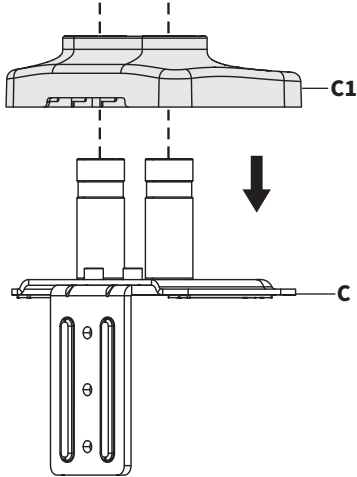
Remove Plastic Cover (C1) from Base (C).



Fully Loosen the Clamp Bolt (D1) on Lower Clamp (D).



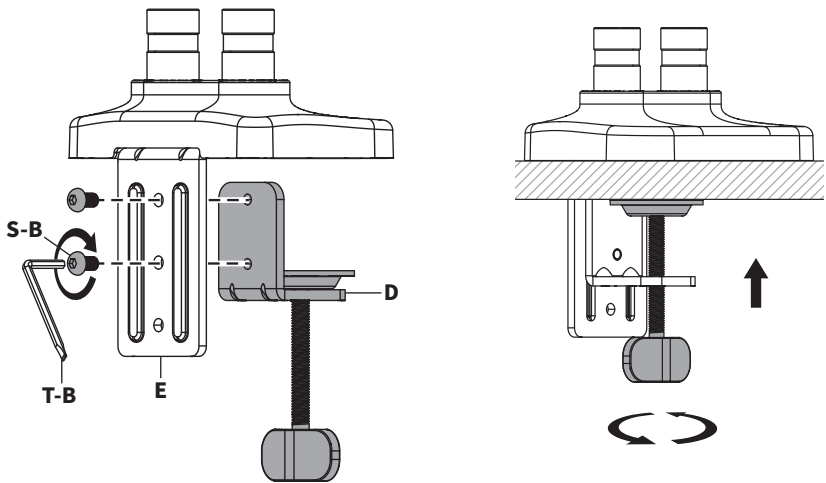
Install Upper Clamp (E) to Base (C) using M6x8mm Screws (S-A) and 5mm Allen Wrench (T-A).



Reinstall Plastic Cover (C1) to Base (C).

## For Desktops 0.4" – 1.9" (10-50mm) Thick

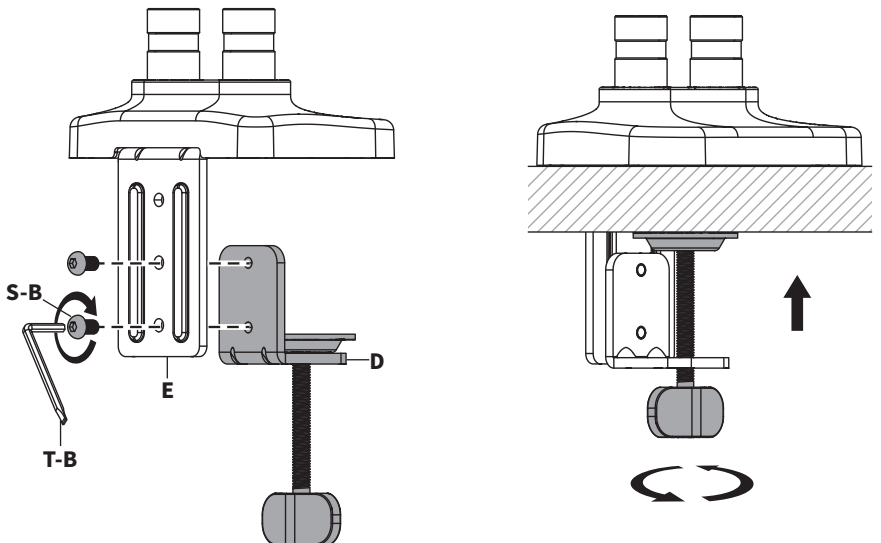
Attach Lower Clamp (D) to the **upper** two holes on Upper Clamp (E) using M6x10mm Screws (S-B) and 4mm Allen Wrench (T-B). Clamp the assembly to the desktop.



---

## For Desktops 1.8" – 3.1" (45-80mm) Thick

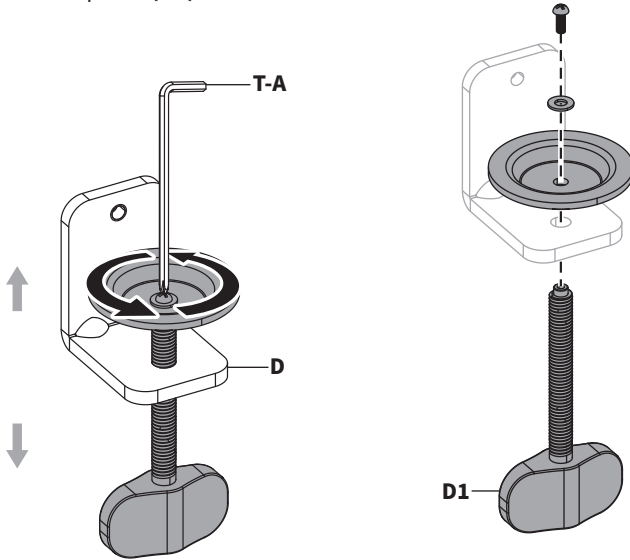
Attach Lower Clamp (D) to the **lower** two holes on Upper Clamp (E) using M6x10mm Screws (S-B) and 4mm Allen Wrench (T-B). Clamp the assembly to the desktop.



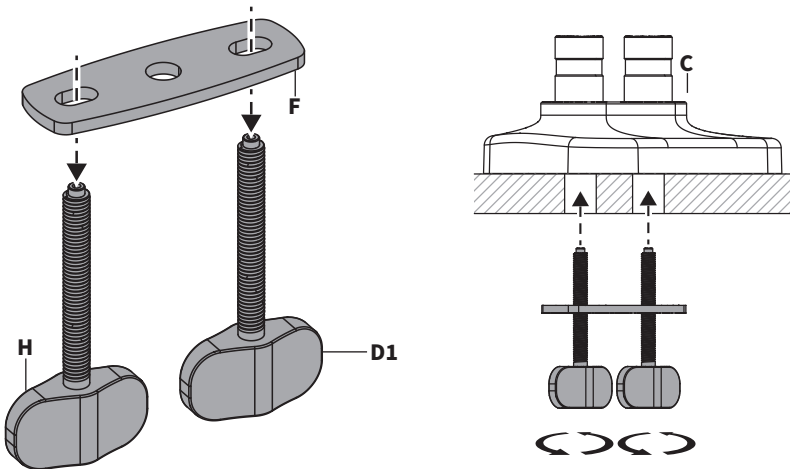
Proceed to STEP 2  
on **Page 7**

## Option 2: Grommet Installation

Disassemble Lower Clamp (**D**) using the Phillips end on 5mm Allen Wrench (**T-A**) and separate the Clamp Bolt (**D1**).



Place Grommet Plate (**F**) onto the Clamp Bolt (**D1**) and Knob (**H**), then secure Base (**C**) to the desktop.

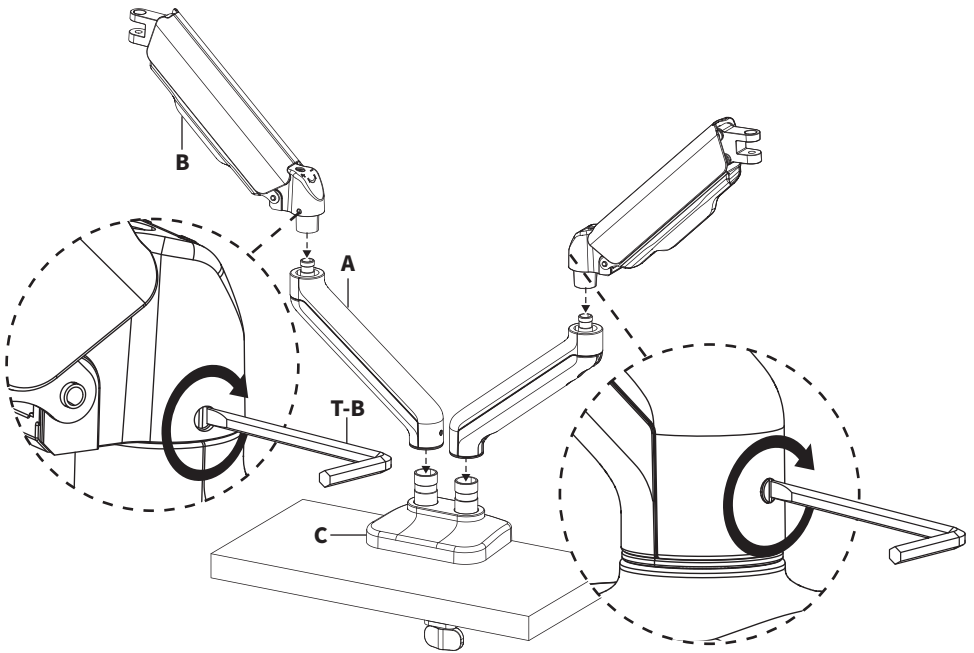


### No Grommet Hole?

If you do not have an existing hole for installation, drill a hole through your desktop in your desired mounting location using a 3/8" (10mm) drill bit.

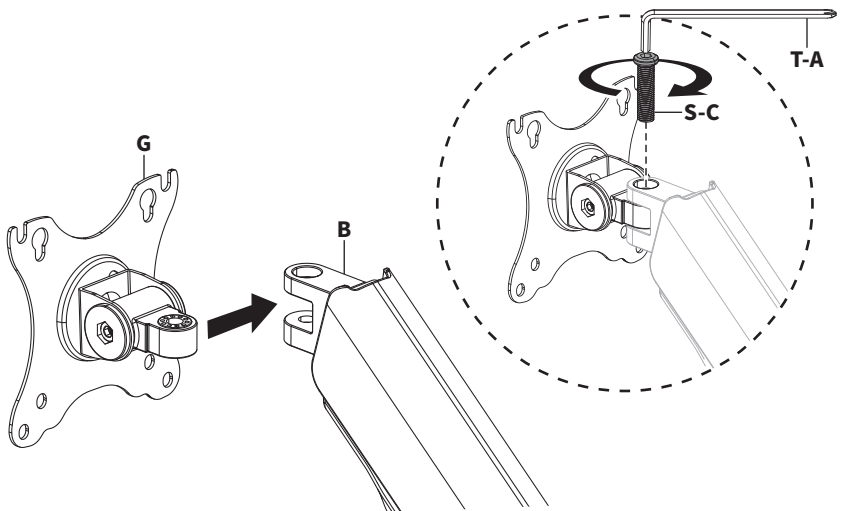
## STEP 2

Place Lower Arms **(A)** onto Base **(C)**, then place Upper Arms **(B)** onto Lower Arms **(A)**. Tighten the set screws on the back of all arms using the flat end on 4mm Allen Wrench **(T-B)**.



## STEP 3

Attach VESA Plates **(G)** to Upper Arms **(B)** using M8x30mm Screws **(S-C)** and 5mm Allen Wrench **(T-A)**.

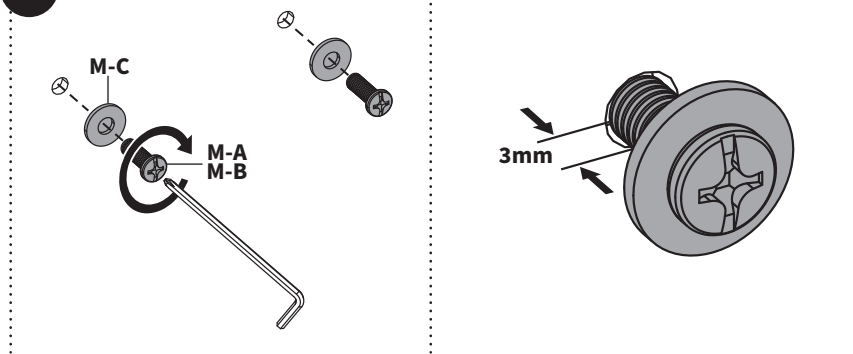


## STEP 4

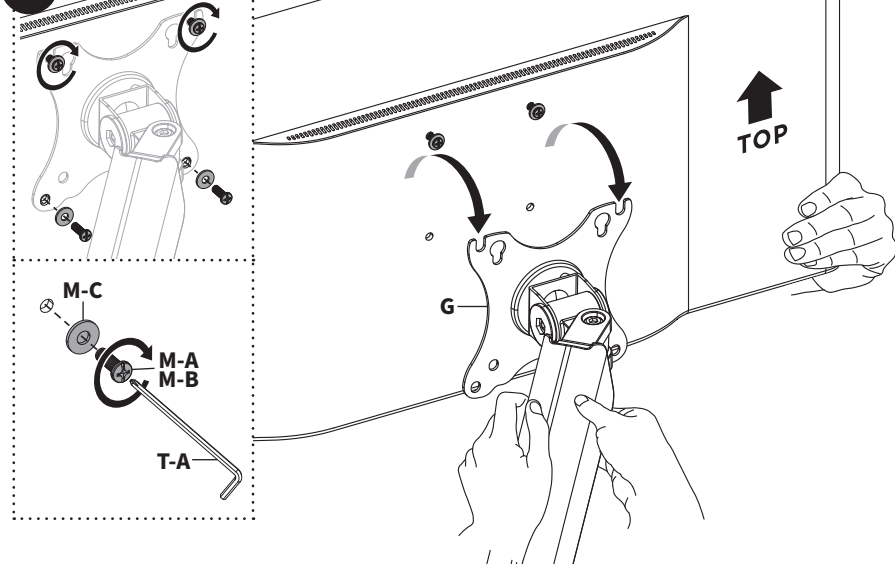
**4.1** Determine which Screws (**M-A or M-B**) appropriately fits your monitors. Thread two Screws with M5 Washers (**M-C**) into the top VESA holes of the monitors leaving a 3mm gap.

**4.2** Place monitors onto VESA Plates (**G**). Tighten the top two screws and install the remaining Screws (**M-A or M-B**) and M5 Washers (**M-C**) using the Phillips end of 5mm Allen Wrench (**T-A**).

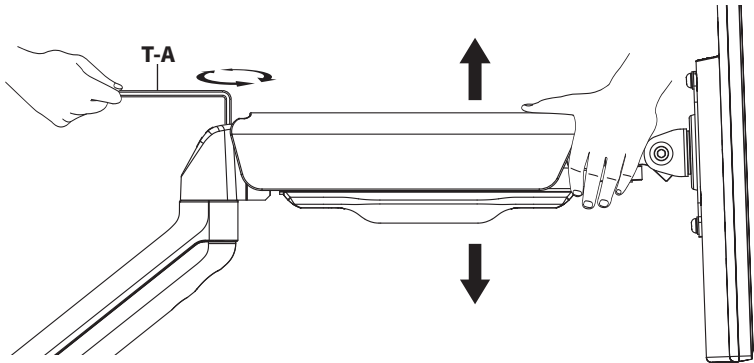
**4.1**



**4.2**



## Adjusting Monitor Height



### 1 Position Mount Arm

Position the arm horizontally, as shown above, and firmly hold in place.

### 2 Insert 5mm Allen Wrench (T-A) Into Adjustment Screw

Insert the 5mm Allen Wrench (T-A) in to the adjustment screw on the back of the monitor arm.

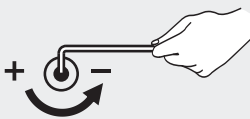
### 3 Turn 10-20x to Set Monitor Height

Turn 5mm Allen Wrench (T-A) 10-20 times to obtain proper support for your monitor. Use the guide below to adjust the tension according to the amount of counterbalance needed to support the monitor.

## Tension Adjustment Guide

### Counter-Clockwise: Decrease Support

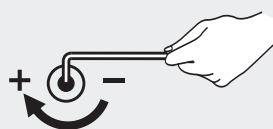
*[if monitor will not lower]*



Turn the adjustment screw **counter-clockwise** to **decrease** the support for your monitor, allowing it to be lowered.

### Clockwise Increase Support

*[if monitor will not raise]*

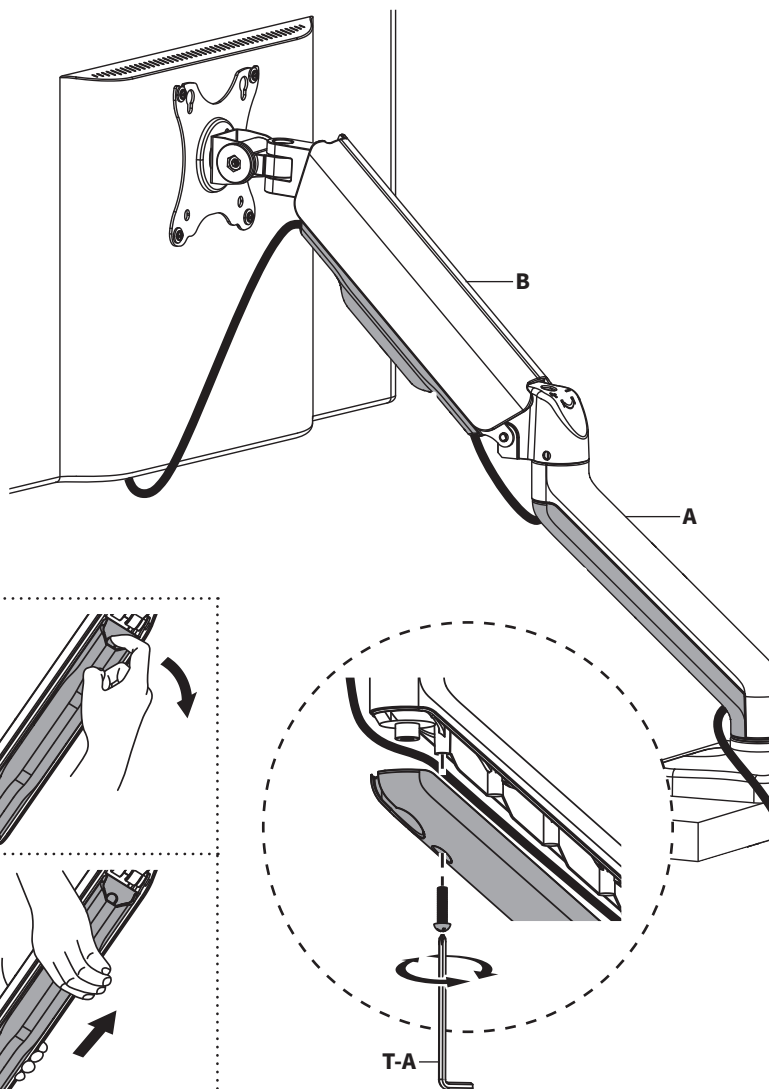


Turn the adjustment screw **clockwise** to **increase** the support for your monitor, allowing it to be raised up.

**Note: Requires 10-20 Turns**

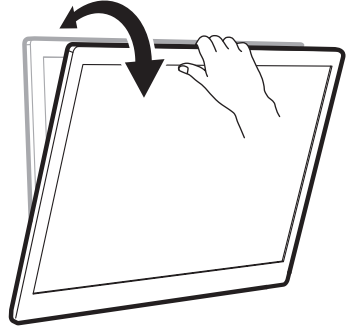
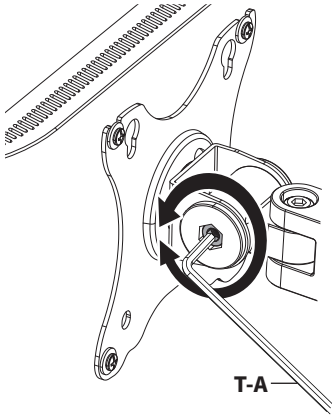
## STEP 6

Remove plastic covers from Arms **(A, B)** using Phillips screwdriver end of 5mm Allen Wrench **(T-A)**. Run cables from monitor through bottom of Arms, then reattach plastic covers.



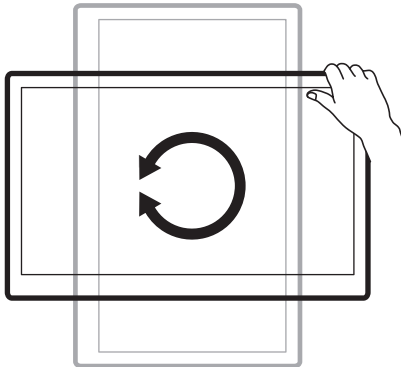
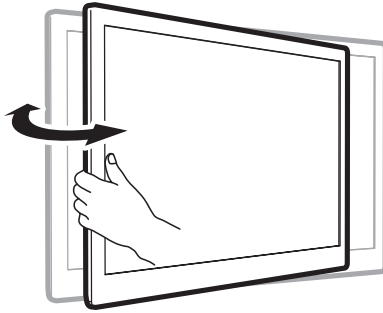
## Adjustments

Turn the Adjustment Screw using 5mm Allen Wrench (**T-A**) to adjust the tilt joints.



---

Adjust as desired.





## Need Help? **We're Here For You**

Monday-Friday from 7am-7pm CST

Saturday 8am-4pm CST



Email Us  
[help@vivo-us.com](mailto:help@vivo-us.com)



Chat with Live Agent  
[www.vivo-us.com](http://www.vivo-us.com)



Give Us a Call  
309-278-5303 ext. 1



VIVO-us



@vivo\_us



@VIVOus



VIVO