

# Pneumatic Arm Dual Monitor Desk Mount

STAND-V002K Series  
Assembly Manual

---

Individual Product SKUs

STAND-V002K    STAND-V002KW



## Better Products for a Better Workspace Experience

We are dedicated to creating high-end ergonomic solutions  
for the office with top of the industry support.

Explore Endless Workspace Solutions

**[www.vivo-us.com](http://www.vivo-us.com)**



# WARNING



If you do not understand these directions, or if you have any doubts about the safety of the installation, please contact our product support team at 309-278-5303 or [help@vivo-us.com](mailto:help@vivo-us.com) for further assistance. Check carefully to make sure there are no missing or defective parts. Failure to report missing parts within 30 days may result in denial of free replacement. Improper installation may cause damage or serious injury. Do not use this product for any purpose that is not explicitly specified in this manual. Do not exceed weight capacity. We cannot be liable for damage or injury caused by improper mounting, incorrect assembly or inappropriate use.



## WARNING: CHOKING HAZARD

SMALL PARTS - NOT FOR CHILDREN UNDER 3 YEARS. ADULT SUPERVISION IS REQUIRED.



## DO NOT EXCEED WEIGHT CAPACITY

FAILURE TO DO SO MAY RESULT IN SERIOUS INJURY.



## NEVER EXTEND PAST DESKTOP EDGE

Monitor should always be positioned over the desktop to prevent potential damage to desktop. Clamp is **NOT** designed to provide full support to the monitor when the arm is positioned away from the desktop, putting unnecessary strain on your desktop. Doing so may result in damage and/or serious personal injury.

## Need Help? We're Here For You

*US-Based Customer Support from Trained Professionals*

**Monday-Friday from 7am-7pm CST**

**Saturday 8am-4pm CST**



**Email Us**

[help@vivo-us.com](mailto:help@vivo-us.com)



**Chat with Live Agent**

[www.vivo-us.com](http://www.vivo-us.com)



**Give Us a Call**

309-278-5303 ext. 1



**Assembly Video & Product Info**

[www.vivo-us.com/products/stand-v002k](http://www.vivo-us.com/products/stand-v002k)

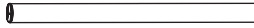
## Package Contents



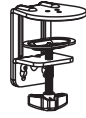
**A (x1)**  
Arm



**B (x2)**  
VESA Plate



**C (x1)**  
Pole



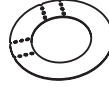
**D (x1)**  
Clamp



**E (x1)**  
Cable Clip



**F (x1)**  
Grommet  
Plate



**G (x1)**  
Soft Pad



**H (x1)**  
Support Plate

---

## Included Hardware & Tools



**S-A (x2)**  
Thumbscrew



**S-B (x3)**  
M6x16mm Screw



**M-A (x8)**  
M4x12mm  
Screw



**M-B (x8)**  
M4x16mm  
Screw



**M-C (x8)**  
M5x12mm  
Screw



**M-D (x8)**  
M5x16mm  
Screw



**M-E (x8)**  
D5 Washer



**M-F (x8)**  
Spacer



**T-A (x1)**  
4mm Allen  
Wrench



**T-B (x1)**  
6mm Allen  
Wrench

---

## Tools Needed:



**Phillips  
Screwdriver**



**Scissors**

## Weight Capacity:

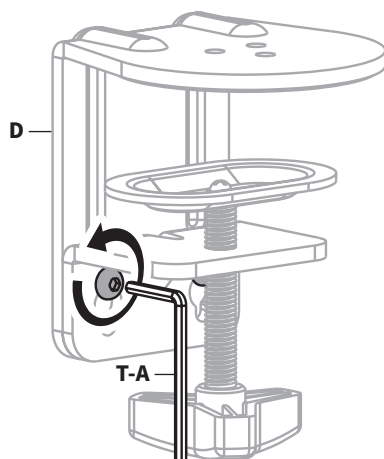


**Per Monitor**

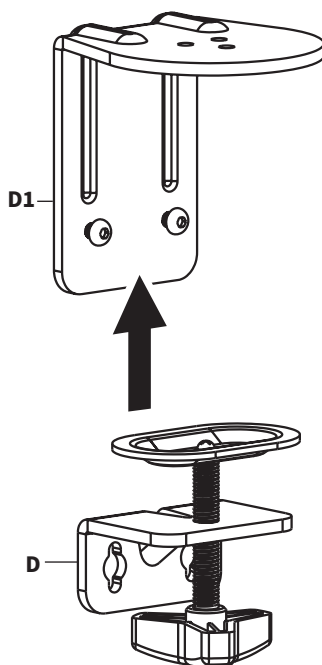
## Assembly Steps

### STEP 1

Loosen the two preinstalled screws on Clamp (**D**) using 4mm Allen Wrench (**T-A**).



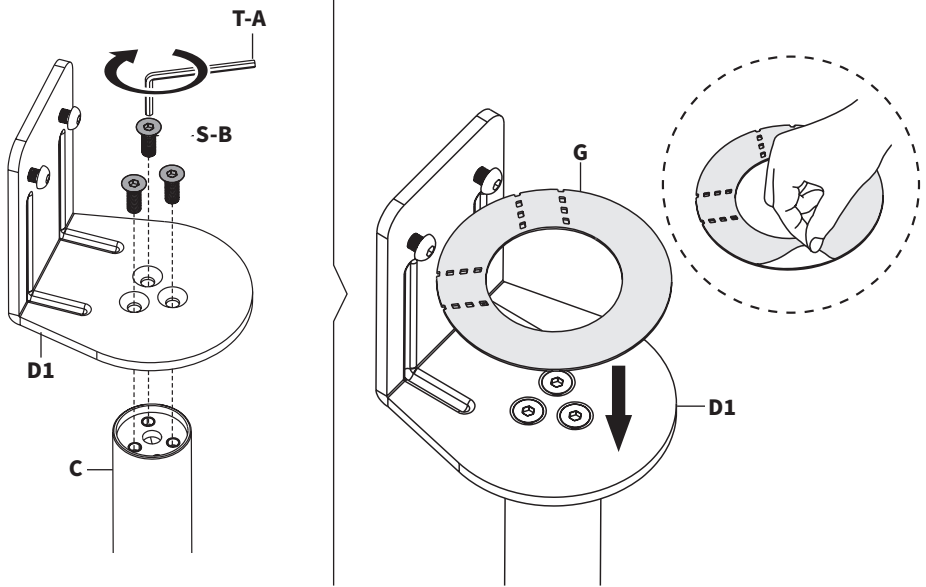
Separate Clamp Brace (**D1**) from Clamp (**D**).



## STEP 2

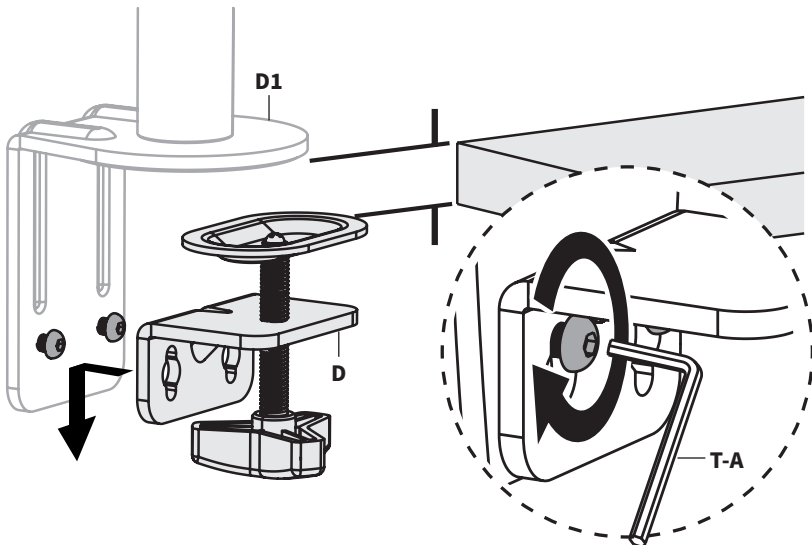
### Option 1: Clamp Installation

Attach Clamp Brace (**D1**) to Pole (**C**) using M6x16mm Screws (**S-B**) and 4mm Allen Wrench (**T-A**). Remove adhesive backing from Soft Pad (**G**) apply to Clamp Brace (**D1**) as shown.



#### 1.1 Desktop Thickness: 0.40" - 2" (10 - 50mm)

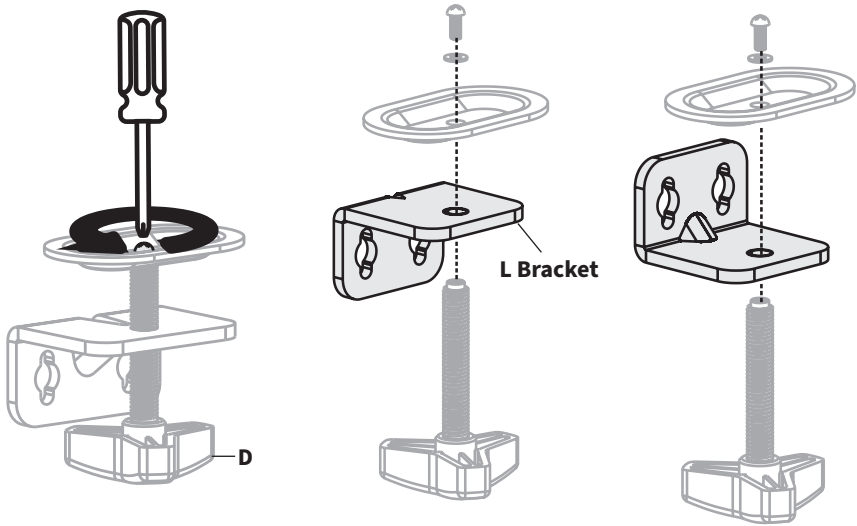
Reattach Clamp (**D**) to Clamp Brace (**D1**) using 4mm Allen Wrench (**T-A**), then clamp to the desktop.



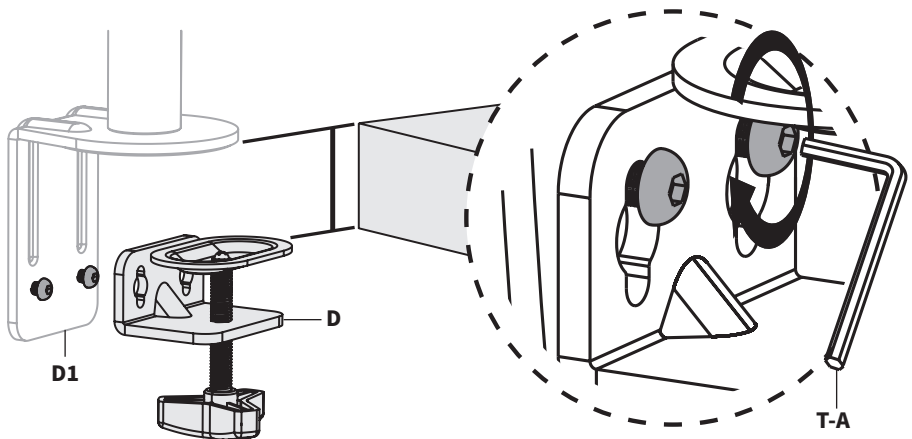
Proceed to **STEP 3**  
on **Page 9**

## 1.2 Desktop Thickness 1.77-3.34" (45 - 85mm)

Disassemble the Clamp (**D**) using a Phillips screwdriver. Flip the **L Bracket** around and reassemble the Clamp.



Reattach Clamp (**D**) to Clamp Brace (**D1**) using 4mm Allen Wrench (**T-A**), then clamp to the desktop.

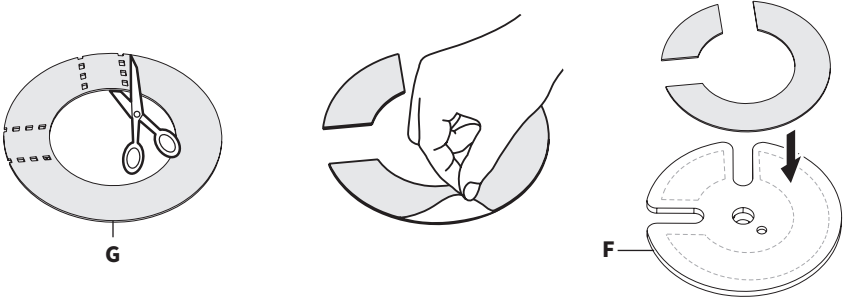


Proceed to STEP 3  
on **Page 9**

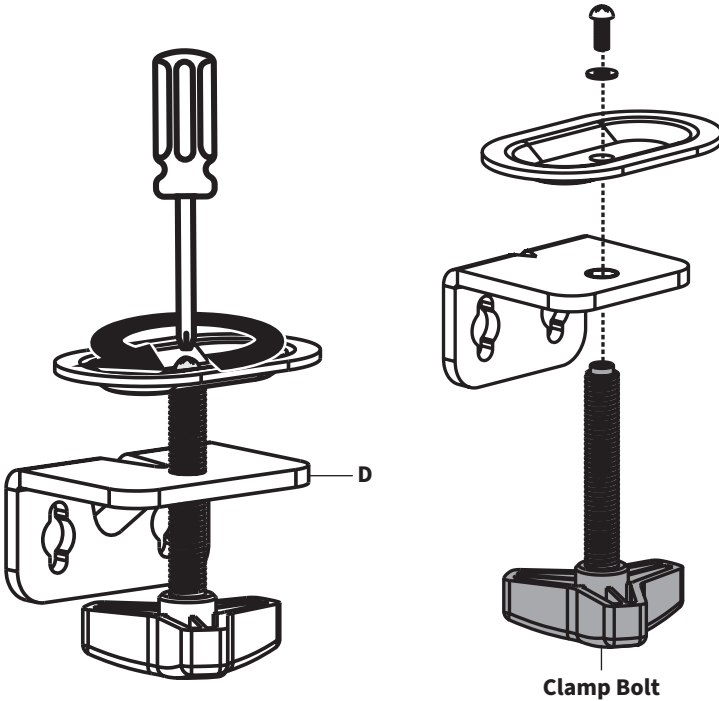
## Option 2: Grommet Installation

Desktop must be 0.4" - 1.5" (10-40mm) thick

Cut the Soft Pad (**G**) along the indentations using a scissors. Remove adhesive backing and apply to Grommet Plate (**F**) as shown.

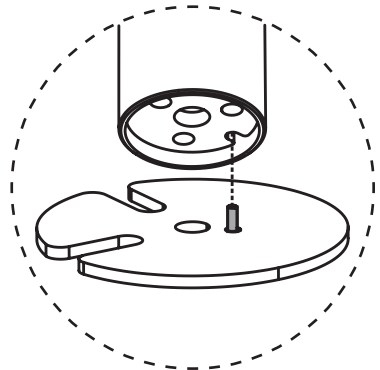
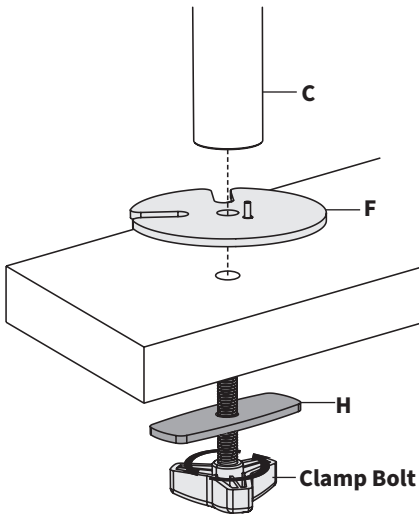


Disassemble Clamp (**D**) using a Phillips screwdriver and remove the **Clamp Bolt**.



## Option 2 – Cont'd

Attach Pole (C) and Grommet Plate (F) to the desktop using the Support Plate (H) and Clamp Bolt. Grommet hole size must be 0.4" - 2.36" (10-60mm).



**!** The **Stud** on Grommet Plate (F) should be inserted into Pole (C) as shown.



### Don't Have a Grommet Hole?

If you do not have an existing hole for installation, drill a hole through your desktop in your desired mounting location using a 3/8" (10mm) drill bit.

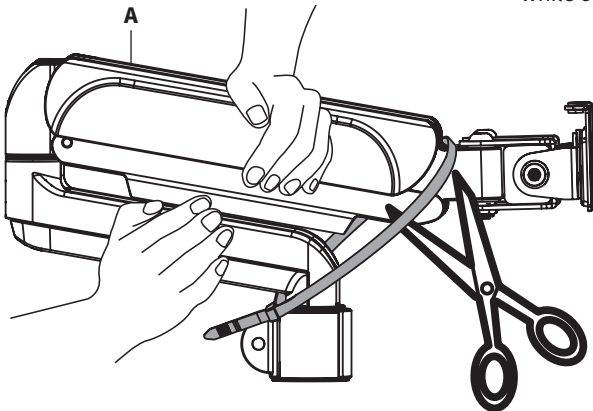
## STEP 3

While holding the Arm (A) together, cut the shipping tie using a scissors and gently release Arm.



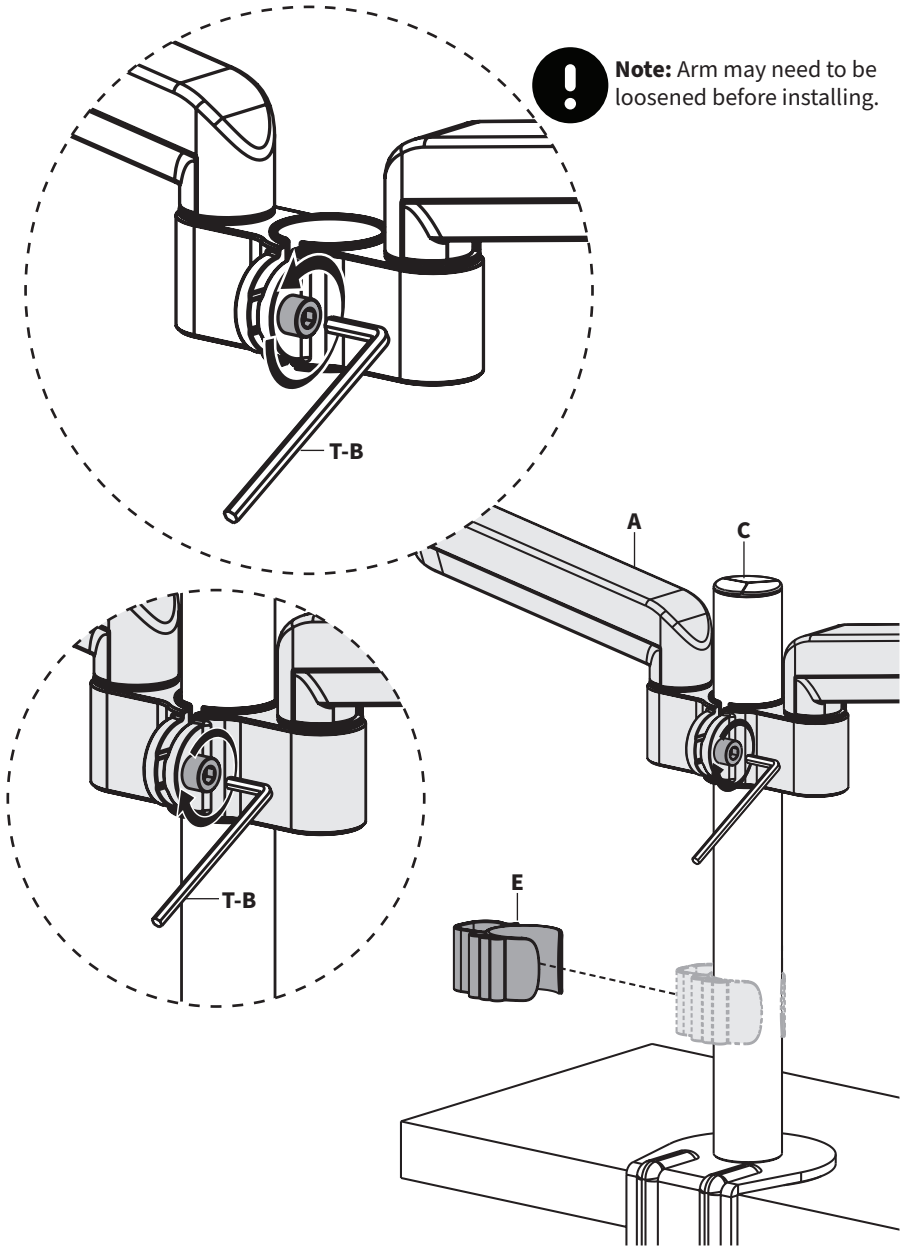
**\*\* FIRMLY HOLD ARM \*\***

To avoid injury, firmly hold Arm together while cutting the shipping tie.



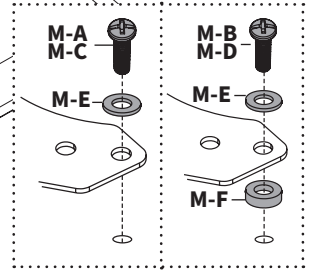
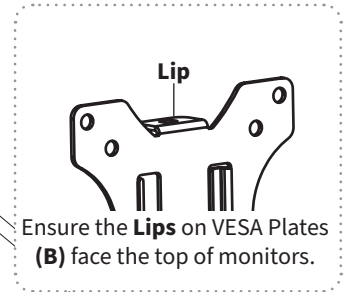
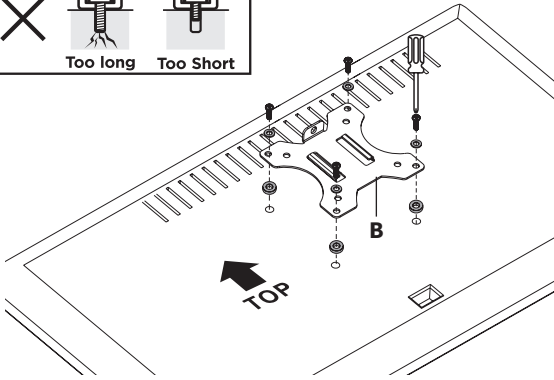
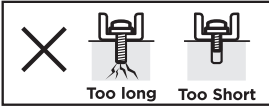
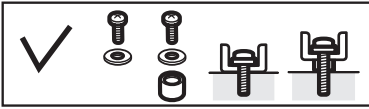
## STEP 4

Slide Arm (A) onto Pole and secure by tightening the screw on the back using 6mm Allen Wrench (T-B). Attach Cable Clip (E) to Pole (C).

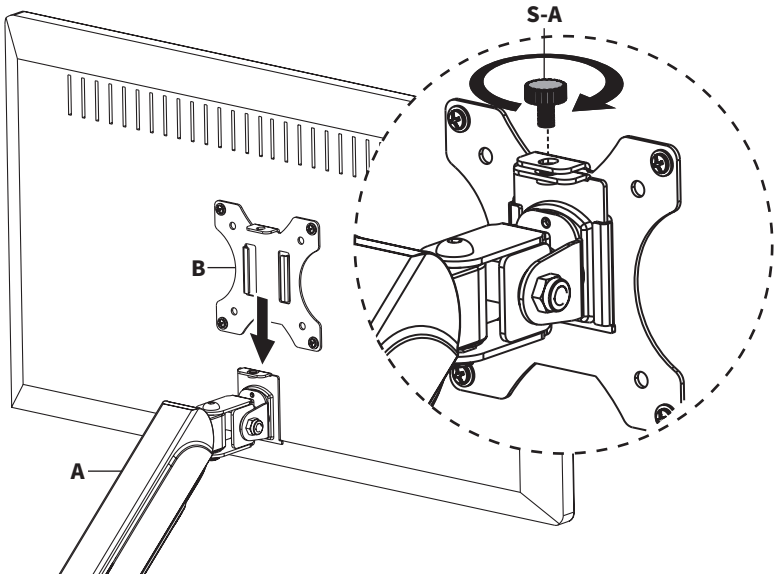


## STEP 5

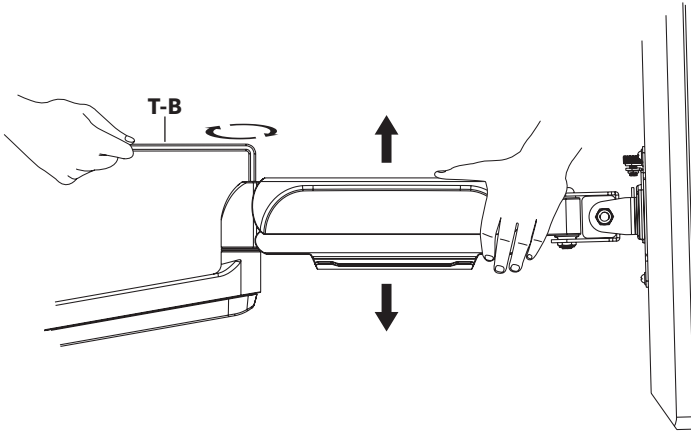
Attach VESA Plates (**B**) to the back of monitors using appropriate Screws (**M-A thru M-D**) and Washers (**M-E**). Spacers (**M-F**) can be used if needed. Tighten using a Phillips screwdriver.



Slide VESA Plates (**B**) with monitors onto the Arm (**A**) and secure using Thumbscrews (**S-A**).



## Adjusting Monitor Height



### 1 Position Mount Arm

Position the arm horizontally, as shown above, and firmly hold in place.

### 2 Insert 6mm Allen Wrench (T-B) Into Adjustment Screw

Insert the 6mm Allen Wrench (T-B) in to the adjustment screw on the back of the monitor arm.

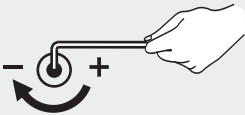
### 3 Turn 10-20x to Set Monitor Height

Turn 6mm Allen Wrench (T-B) 10-20 times to obtain proper support for your monitor. Use the guide below to adjust the tension according to the amount of counterbalance needed to support the monitor.

## Tension Adjustment Guide

### Clockwise: Decrease Support

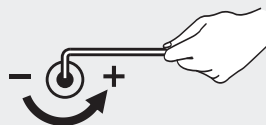
*[if monitor will not lower]*



Turn the adjustment screw **clockwise** to **decrease** the support for your monitor, allowing it to be lowered.

### Counter-Clockwise Increase Support

*[if monitor will not raise]*

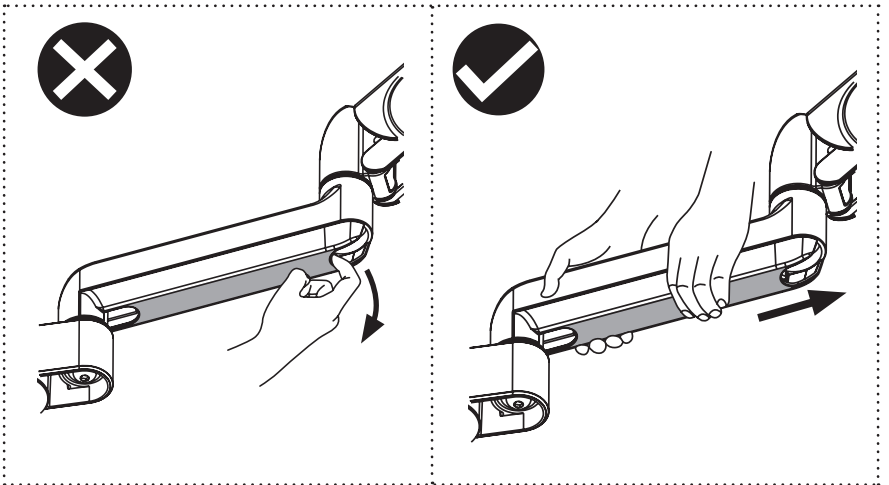
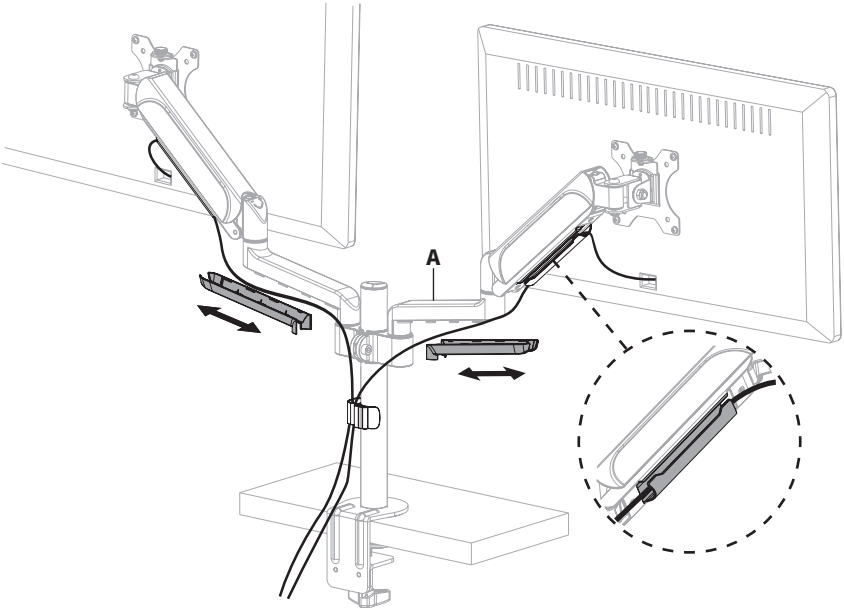


Turn the adjustment screw **counter-clockwise** to **increase** the support for your monitor, allowing it to be raised up.

**Note: Requires 10-20 Turns**

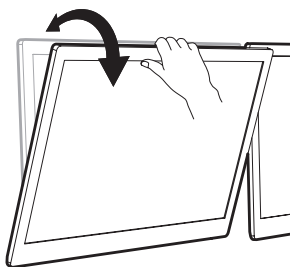
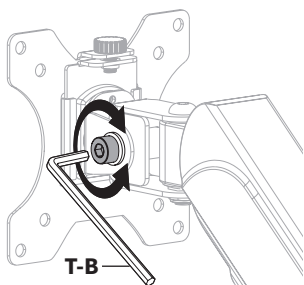
## STEP 7

Remove bottom cable covers from Arm **(A)** by sliding forward. Organize cables and reattach covers.



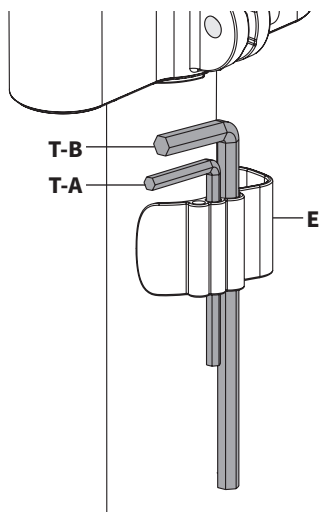
## Adjustments

Adjust the tilt support by turning the Adjustment Screw using 6mm Allen Wrench (**T-B**).



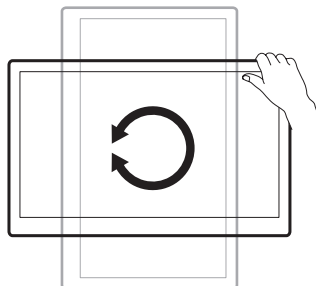
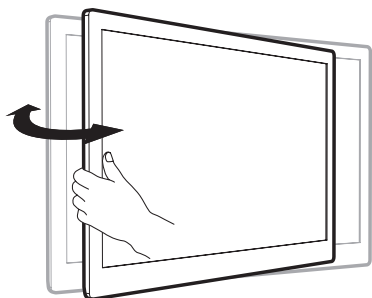
---

Store Allen Wrenches (**T-A**, **T-B**) in Cable Clip (**E**).



---

Adjust as desired.



V·I·V·



Love Your New Setup?  
**Tag Us on Social!**



@VIVO-us



@vivo\_us



@VIVOus



VIVO



## Need Help? **We're Here For You**

Monday-Friday from 7am-7pm CST  
Saturday 8am-4pm CST



Email Us  
[help@vivo-us.com](mailto:help@vivo-us.com)



Chat with Live Agent  
[www.vivo-us.com](http://www.vivo-us.com)



Give Us a Call  
309-278-5303 ext. 1



VIVO-us



@vivo\_us



@VIVOus



VIVO