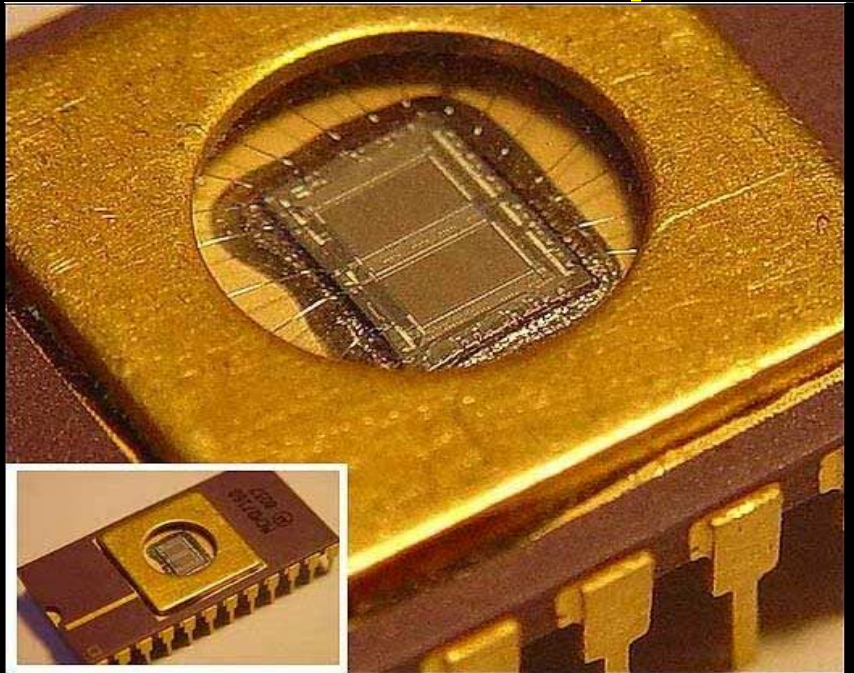
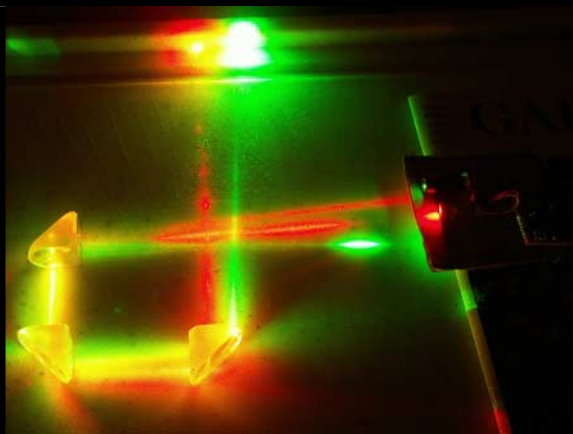


אלונקס - שרותי צריבה זכרונות ומיקרו-בקרים

אלונקס נח היכן האמנות של האלקטרוניקה היא!



• (E)EPROM, OTP, Flash

• מיקרו-בקרים ובקרים מתוכנתים

• ICP/ISP In-Circuit-System

• C/PLD, PAL, GAL, JTAG

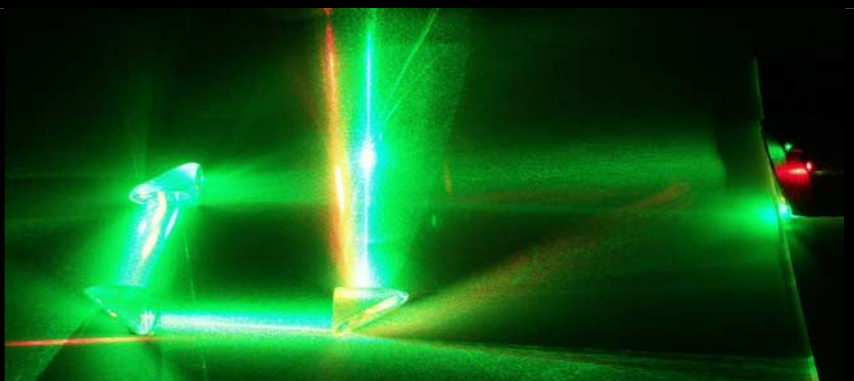
• I²C, SPI Serial EEPROM

• Real-Time Clock Devices

• System & Video BIOS

• גיבוי כרטיסי ודיסקים פלאש

• המרה קבצים בינאריים ..s19, Hex, Bin



Alonex - Special Purpose & Industrial Electronics Professional Repair

Alonex Lab is looking
for an Experienced
Practical **Electronic**
Engineer for PC Boards
Repairing at the
Component Level

אלונקס הנדסה אלקטרונית בע"מ
פארק מתם, בנין 22, חיפה, ת.ד. 123 חולון 5810101
טל': 03-5037095, 04-8557095 פקס: 03-5031048
i.alonex@gmail.com, <https://www.alonex.com>

TECHNICAL BULLETIN

DOC. REF. NAME: TB-053-251029-FW-BACK-UP

Bulletin No.: 053
Created: September 1, 2023
Last modified: October 29, 2025 (restored and modified)
Product: Any
Subject: Structured Back-Up of Software/Firmware Binary Files
Pages: 2 including enclosed pages.
Applicable For:
Note:

**FOR ATTENTION OF THE LAB & FIELD AUTOMATION & CONTROL ENGINEERS
INVOLVING IN MAINTENANCE OF THE INDUSTRIAL AUTOMATION & CONTROL SYSTEMS**

**STRUCTURED BACK-UP OF SOFTWARE, FIRMWARE & PARAMETER BINARY FILES
FOR CNC, PLC, SERVO, VFD DRIVES, FOR MEASUREMENT INSTRUMENTS & FOR SPECIAL CONTROLS**

Backing-up of important data and software are necessary for any computer system, since SW/Data recovery, of any damaged storage media, is a very complicated and expensive process, if recovery is possible at all. Any storage media has a less or more, but limited life time, irrelevantly to a media physics being used, Magnetic HDD/Type, SSD, Flash,... There are much ways and devices intended for backing-up programs and information of CAD and of usual office computers. In addition, serious and professional efforts should be invested in accurate backing-up not only for industrial IBM PC compatible and newer computer systems, but also for non-standard Embedded Computers and Controls being implemented inside of special and industrial control equipment, for example as listed below:

PLC - Programmable Logic Controllers
VFD - Variable Frequency/Speed Drives
XYZ.. Servo Drives
CNC - Computer Numerical Control for different machinery
Hydraulic Servo Systems Controllers
Medical & Measurement Instruments
Industrial Network Equipment

A properly made and stored back-up files, allow recovering of any system with damaged data and/or firmware quickly and safely. All, system Firmware/OS, application programs and configuration parameters' files should be stored with corresponding detailed description files. Description files should include all formal and technical details for the backed-up files. A template example of a such description file is shown below:

Company Name: PRAF Microcomputer Technologies Ltd.
File: R01-208E.txt (A file name of this description file)
Backup File: R01-208E.bin (A file name of backed-up binary executable file or parameters file)
Created: 07.09.23
Last Modified: 09.09.23
Customer: Israel Aircraft Industries Ltd.
Department: CNC Metal Processing
Line: Alonex A3/A4
Machine/Control: AMK AZ-05
Card: AMK AZ-R01
Device: ST M27C4002-10FI EPROM
Device marked: "AZ-R01 V02.08","1996","25399"
Note: English Language user interface.
ChckSum: 40D4h
Programmer: LabTool-48UXP



TECHNICAL BULLETIN

DOC. REF. NAME: **TB-053-251029-FW-BACK-UP**

Maximum information, referring all the important technical aspects and features, equipment HW revisions, modes of operation, etc., should be included in corresponding description files. Creation and modification dates should track a history of updates and corrections for the equipment, its SW/FW and parameters.

Special and universal programmers, special parameter loader programs, special cables and adapters and/or other development tools should be used for downloading and uploading back-up files. Storage of the back-up files should be at least in double copies on physically different medias and on different storage place/system. It can be a few PC Servers with different HDD disks, DVD disks, or a NAS -Network Attached Storage Embedded Portable Computers with at least two duplicated HDD disks. SSD disks and Flash cards/keys are not recommended as a storage media for a long term storage of back-up files, but can be used as temporary media while backing-up.

A back-up storage(s) should be limited for access by unauthorized people, and it should be located in a safe and air conditioned room with a proper environment ranges. A dedicated personal should be allocated for accurate keeping the back-up storage, for periodic checking and updating of the back-up base, for a careful maintenance the base.

Each back-up file should be verified/compared with original one and/or with a stored one, and actual and desired checksums of the files should be verified properly while handling.

By Oleg Tverdovlev

M.Sc. - Master in The Analog & Discrete Control in Electrical & Mechanical Systems

Related resources:

<https://www.praftec.com/tb/TB-052-220525.pdf>

<https://www.praftec.com/tb/TB-039-060608.pdf>

<https://www.praftec.com/tb/TB-041-060717.pdf>

<https://www.alonex.com/pdf/AX-PGM.pdf>

<https://www.alonex.com/pdf/AX-BUP.pdf>